



# OFFICE SUITE SUBLEASE

1750 BRIDGEWAY, SUITE A100, SAUSALITO

**2,914 RSF\***



## SUBLEASE TERMS

- 2,914 rentable square feet (RSF)
- \$3.00/RSF
- Tenant pays utilities and janitorial
- Sublease until May 1, 2011  
(additional term available beyond that)

## FEATURING

- Best waterview in Sausalito
- Highly visible building with good local recognition
- T1 line and cable TV/Internet in suite
- 7 private offices
- 2 bathrooms
- Kitchenette
- Conference room
- Large central work area
- 5 reserved covered parking spaces  
(plenty of onstreet parking available)

## NEIGHBORHOOD

- Walking distance to downtown, multiple restaurants and the ferry
- Along bike trail
- Dunphy Park (across the street)

\*Information provided is deemed accurate but is not guaranteed. All sizes are approximate.

**LEARN MORE ABOUT  
this Prime Sausalito Suite!**

### CONTACTS

John Greene  
john@rhgreene.com

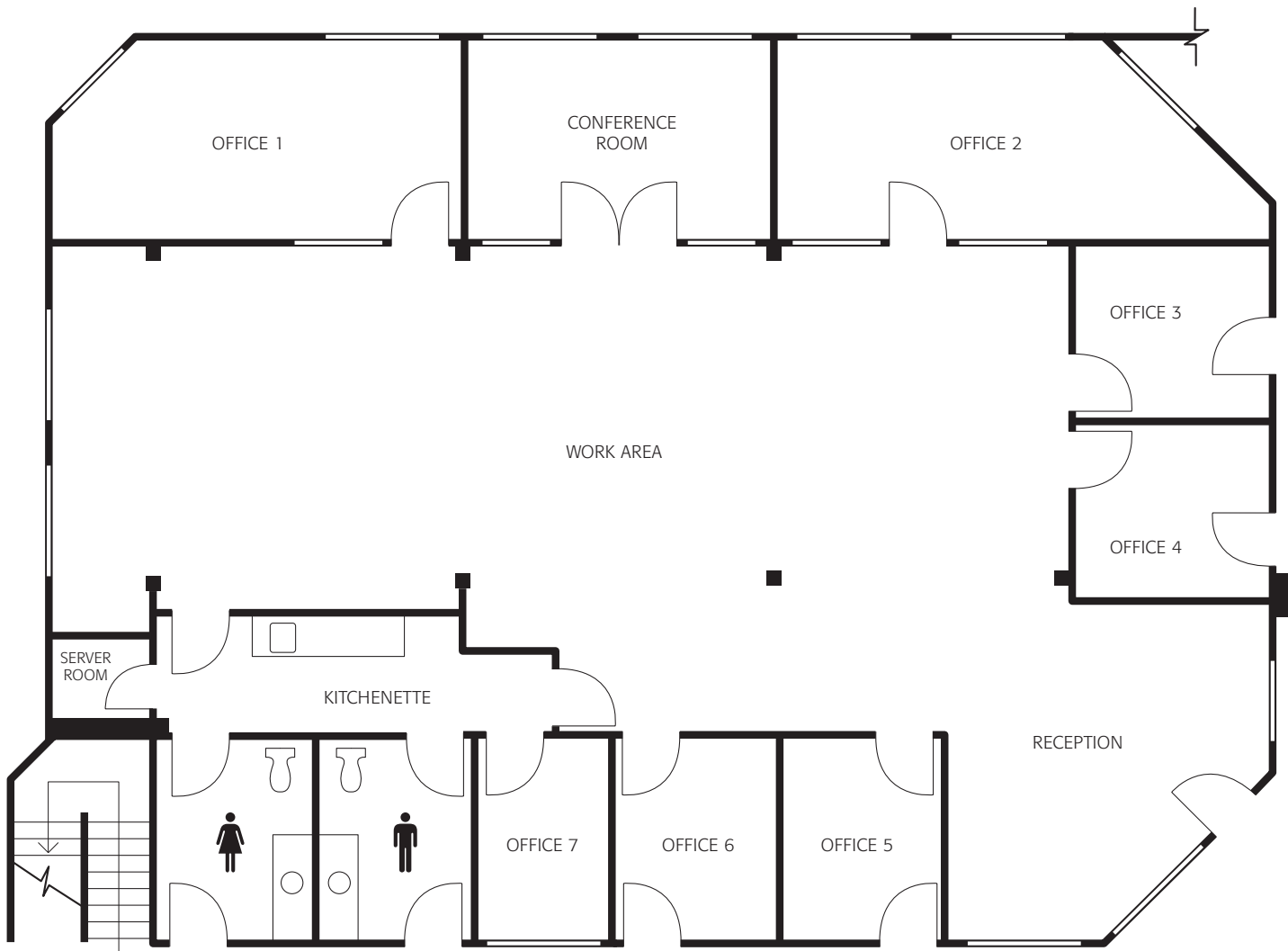
CELL  
415.302.6574  
DRE# 00813572

Mary Fraser  
mary@rhgreene.com

CELL  
415.686.8072  
DRE# 01171593

1750 BRIDGEWAY, SUITE A100, SAUSALITO

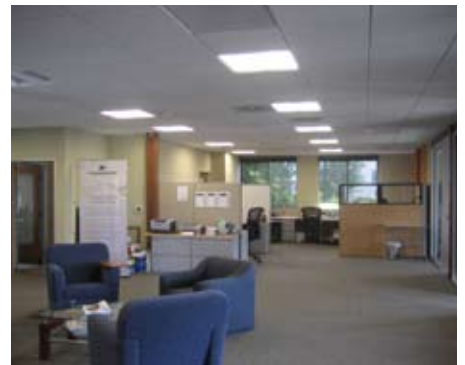
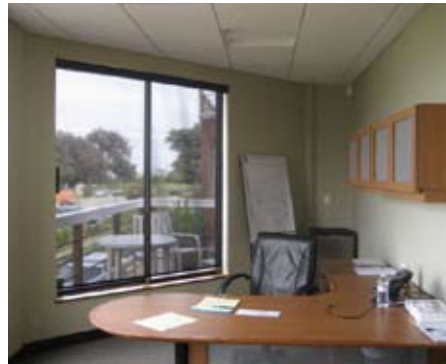
**2,914 RSF\***



\*Information provided is deemed accurate but is not guaranteed. All sizes are approximate.

1750 BRIDGEWAY, SUITE A100, SAUSALITO

**2,914 RSF\***



\*Information provided is deemed accurate but is not guaranteed. All sizes are approximate.